

San Francisco Zoo's Wellness Program

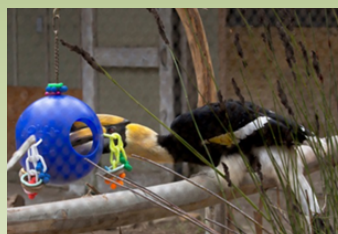


Jason Watters
Bethany Krebs
Debra Marrin

Why Wellness?

Vision: Thriving Zoo Animals are key
to meeting all aspects of the Zoo's Mission

SF Zoo Mission: Connect people with wildlife, inspire
caring for nature and advance conservation action.



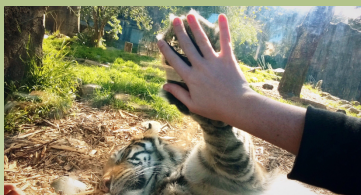
What is Wellness?

Wellness at San Francisco Zoo is an **integrative** initiative.

We investigate how to measure and ensure **positive animal welfare**.

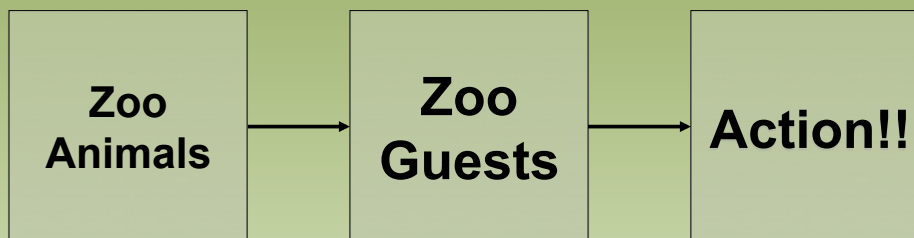
We understand that our animals and visitors together are a significant **conservation resource**.

We study how the **connection** between visitors and animals drives socially responsible actions.



We teach and share our **knowledge**.

This is an important conservation connection!



But making this connection depends on animals' **Wellness.**

We Built a Multifaceted Program

- Wellness Team
- Wellness Center
- Enhanced Training and Enrichment
- Outreach/Interpretation
- University and Zoo Collaborations



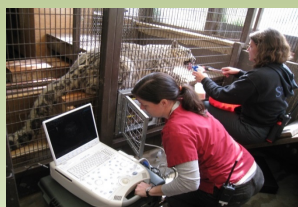
AZA Standards

- Standards progress continually
- Animal Welfare
- Enrichment
- Training



Wellness Team

- Expertise in training, animal enrichment, nutrition, veterinary medicine, and zoo science
- We work with keepers, curators, and hospital staff to make sure animals' needs are addressed on an individual basis
- By addressing physical, medical, and mental needs we ensure animals thrive



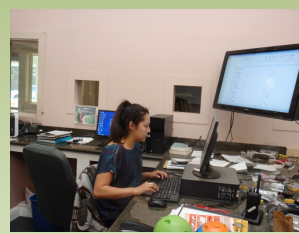
Wellness Center

- Classroom
- Library
- Offices



Wellness Center

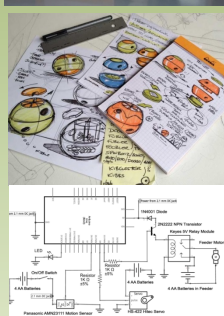
- Behavior Laboratory
- Students and staff review and interpret data collected.
- Papers are published when studies are complete.



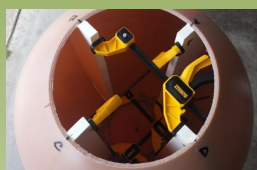
Wellness Center

- Markowitz Enrichment Prototyping Laboratory

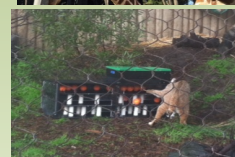
Invent



Build



Deploy



Inventing Wellness



- Develop interactive, dynamic enrichment devices
- Assess behavioral impacts of new devices



Have you noticed the contraption above this enclosure?

This device stimulates the anteater to investigate its surroundings and drives natural foraging behavior. By distributing food at different times and locations, the device makes the reward less predictable. This lack of predictability encourages the anteater to be more active by stimulating it to seek information about its environment. As part of the Stanton Family Wellness Initiative, we are developing and studying methods to engage our animals' minds. This device helps us apply a concept developed by one of our scientists.



CONNECT CARE CONSERVE

A Stanton Family Wellness Project

Teaching wellness through interpretation

Wellness Programs

- **Training** is beneficial to both animals and keepers by developing positive relationships, reducing stress, and providing mental and physical stimulation for the animals. It also falls under the category of enrichment. **Enrichment** is an important part of animal husbandry.



Wellness Program Overview

- Staffs work together for integrated Wellness
 - “Think outside the box”
 - Evaluate the overall picture and goals
- Holistic approach to advancing care
 - Interdepartmental support
 - Objective assessment
 - Visitor perception and experience
 - Staff development training and enrichment
 - Yearly reviews for every animal



Everyone Gets Enrichment and Training



Thank You!

- We Appreciate Your Support

